



UK  
curriculum  
aligned

# Writemark

## Automated marking with personalised feedback and feed-forward for English

Writemark is a powerful, highly accurate and consistent marking and feedback system. By using artificial intelligence, Writemark is capable of analysing handwritten or digital texts, concurrently in real-time, to mark and feedback as per a pre-loaded rubric.

Created in partnership with Faculty.ai and Open.ai (the team behind ChatGPT), Writemark is capable of:

- **Automatic marking narrative and persuasive English texts.**
- **Providing tailored feedback to teachers, for each student, which includes the identification of learning gaps.**
- **Feed-forward suggestions to support interventions with curriculum-linked content.**

## Benefits for schools and teachers



You will have more freedom to choose how you spend your time. Administrative tasks take time and while you are the best judge of how to use that time, Writemark can be leaned on to help give you back that control.



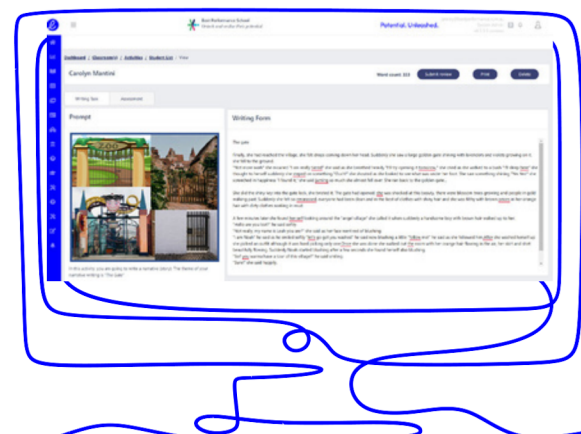
Consistent and standardised marking – Writemark is informed by thousands of student essays and texts. The more it is used, the more accurate it becomes.

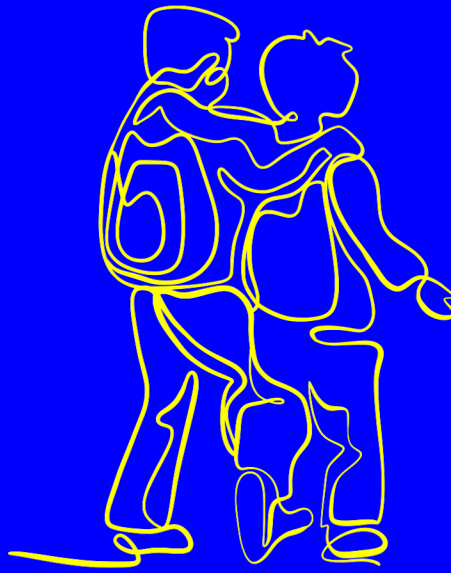


Teachers retain control – Writemark does the initial marking of the uploaded text but teachers always retain the right to review and adjust a mark if required.



Powerful insights – Insights from Writemark can help teachers solve single student, class, cohort or year group gaps in learning.





## The power of Writemark



### Instant

- Real-time marking of essays/texts powered by AI.
- Enables immediate feedback in classroom settings.
- Replaces time-consuming manual marking for teachers .



### Informative

- AI-driven platform based on thousands of existing scripts.
- Marking follows an agreed rubric, ensuring incredible consistency.
- Maintains standardised evaluation, regardless of the number of scripts.



### Intelligent

- Adaptive platform offers immediate insights for writing improvement.
- Delivers curriculum-aligned content to support learning.
- Uses responsible AI to empowers students with personalised guidance.

Powered by

*elostik*

Want to know what Writemark can do for you?

[Book a  
demo](#)

